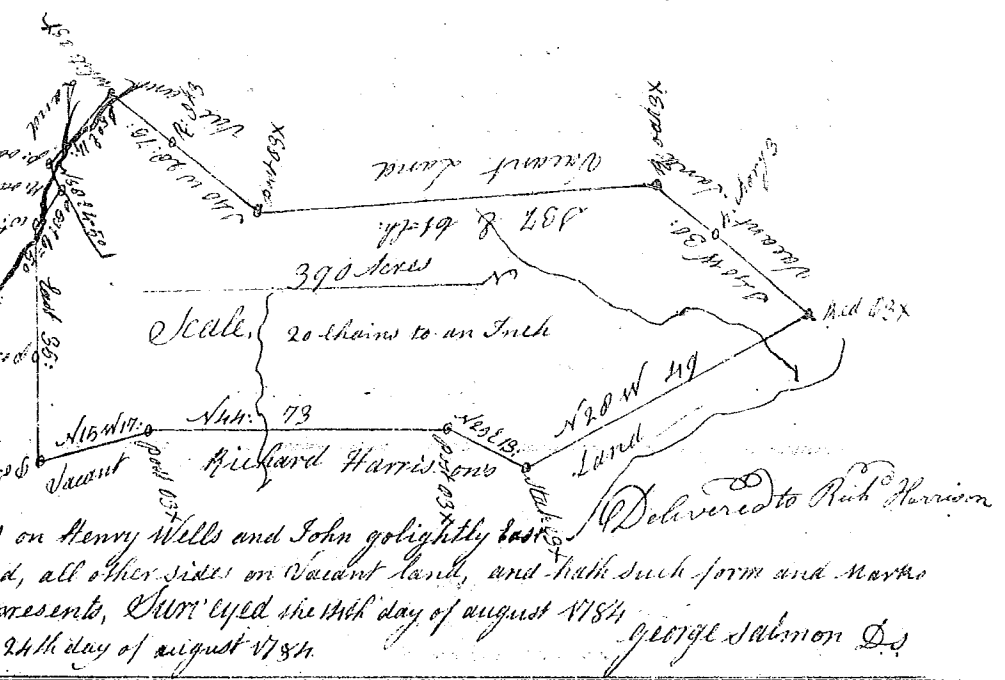


State of South Carolina

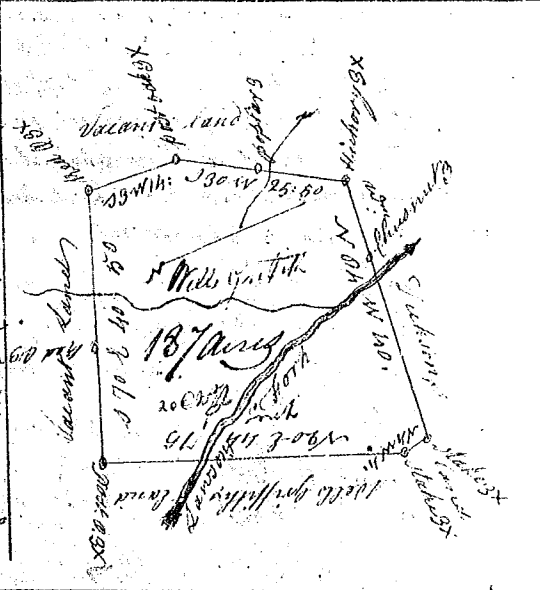
(99)

Pursuant to a warrant from John Thomas Esq<sup>r</sup> Commissioner of Locations dated the 21<sup>st</sup> of May 1784 I have admeasured and laid out unto Richard Harrison a tract of Land containing three hundred and ninety one acres situate in Ninety six district East of the old Boundary on the branches of fairforest creek of Sugar Creek, bounding S on Henry Wells and John Golygightly East on Richard Harrison's Land, all other sides on Vacant Land, and hath such form and marks as the above Plat represents, Surveyed the 18<sup>th</sup> day of August 1784  
Recorded the 24<sup>th</sup> day of August 1784



State of South Carolina

Pursuant to a warrant from John Thomas Esq<sup>r</sup> Commissioner of Locations dated the 21<sup>st</sup> day of July 1784 I have admeasured and laid out unto Wells Griffith a Tract of Land containing One Hundred and Eighty Seven Acres situate in Ninety six District East of the old Indian Boundary on both sides of Lawson's Fork of Pacolale River about four Miles above the Iron Works bounding Nth on William Dickson's Land and N.E. on Wells Griffith's Land, all other sides on Vacant Land, and hath such form & marks as the above Plat Represents. Surveyed the 21<sup>st</sup> day of July 1784  
Recorded the 24<sup>th</sup> day of August 1784



State of South Carolina

Pursuant to a warrant from John Thomas Esq<sup>r</sup> Commissioner of Locations dated the 22<sup>nd</sup> day of May 1784 I have admeasured and laid out unto Wells Griffith a tract of Land containing two hundred Acres situate in Ninety six District East of the old Boundary on both sides of Lawson's fork of Pacolale River bounding N.E. and S.E. on Bishop's Land all other sides on Vacant Land and hath such form and marks as the above Plat Represents, Surveyed the 27<sup>th</sup> day of July 1784  
Recorded the 24<sup>th</sup> day of August 1784

